



WHARF II

LUXURY WATERSIDE TOWNHOMES IN RESTON, VA

A DEVELOPMENT BY MIDCORP ASSOCIATES

WELCOME TO WHARF II

Nestled along the banks of a scenic pond, your Wharf II home is uniquely water-oriented, and conveniently surrounded by Reston's city-style amenities, as well. You can have a candle-lit dinner under the stars. Tie your skiff to the pilings outside your patio/deck or cast your fishing line from there. You can pedal your bike to Reston Town Center. Or, head down the highway towards the Capital pleasures of Washington, DC. The choices are endless, when Wharf II is home.



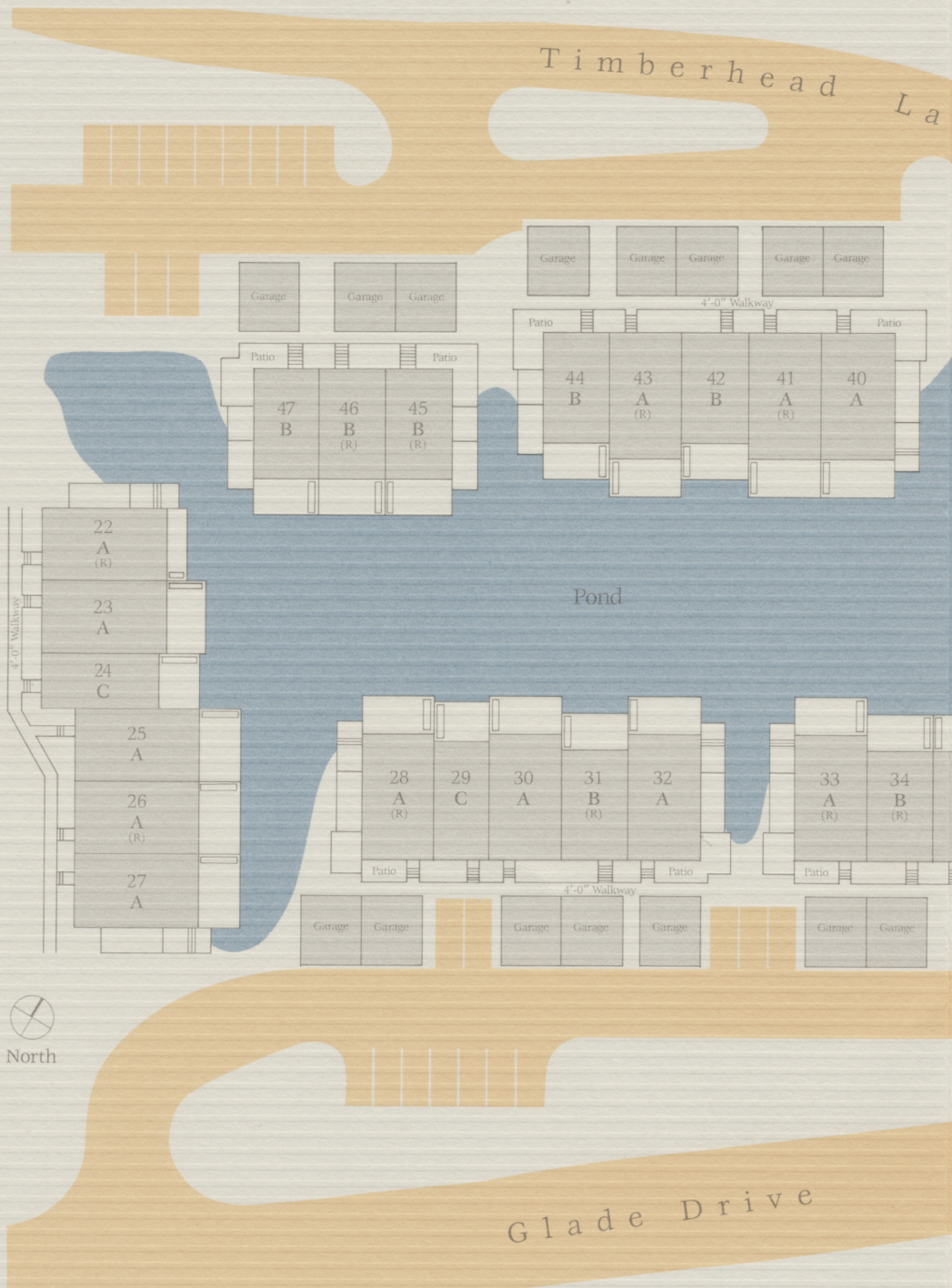
The developers of Wharf II took special care when designing the community's setting. The scale is intimate, yet private, the neighborhood comfortable and relaxed. Every home has a dramatic view of the water and direct pond access. Paved and landscaped walkways connect the clusters of homes. Whether you're in the mood for a barbeque with the neighbors, or for a quiet, shimmery sunset, viewed from the privacy of your balcony, Wharf II makes the living easy!



WELCOME TO RESTON

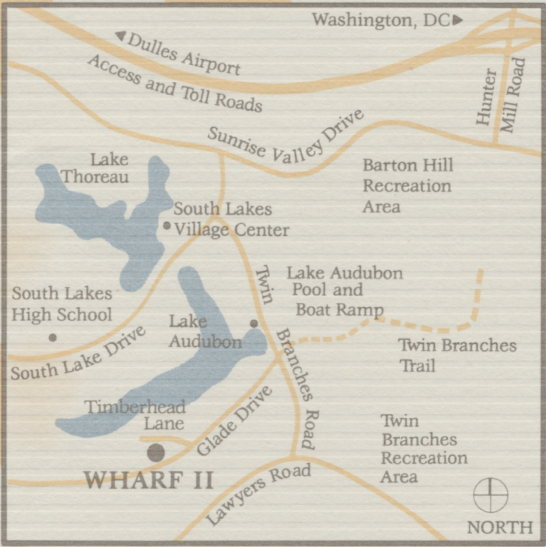
When you own a home at Wharf II, you own a lifestyle unduplicated in Northern Virginia – the unique home-town lifestyle of Reston!

For more than 20 years, Reston has been one of the Washington area's most sought-after neighborhoods. It's no wonder! From high-tech business opportunities to no-pressure leisure time activities, everything you need for work,



home and play can be found within the Reston town limits. Within a short stroll or bike ride you'll find the shops, banks, restaurants of the South Lake shopping center. Schools and churches are nearby. Many of the region's fastest-growing businesses have made Reston their corporate address. And, when it comes to after-work pleasures, the swimming, tennis, biking-and-jogging trails of your neighborhood are there for you to enjoy.

Reston is easily accessible to Downtown Washington, Dulles International Airport and important suburban neighborhoods, via the Dulles Access Road. Whether you choose to enjoy Reston's neighborhood amenities or to pursue the opportunities of metropolitan Washington, you'll find Wharf II handy to them all.



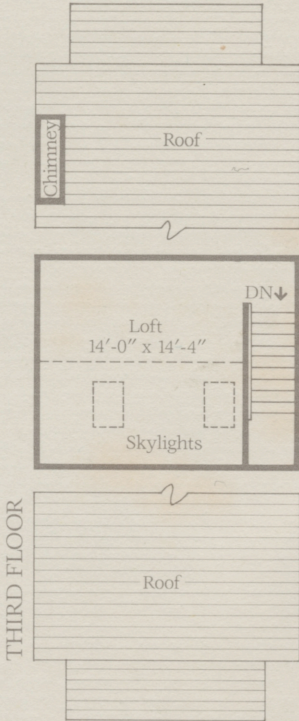
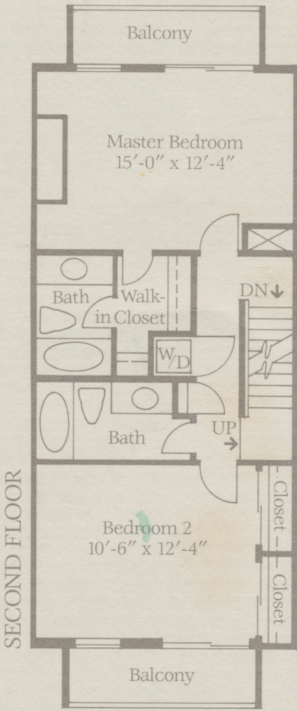
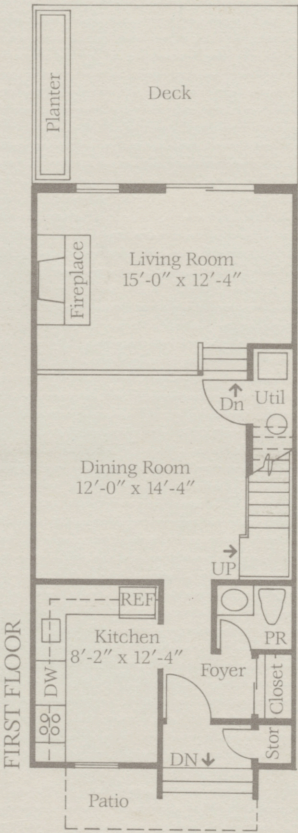
WELCOME HOME

With the space and luxury of a detached home, and the streamlined, easy-maintenance of a townhome, Wharf II offers the best of all worlds. Here is a townhome designed with today's active homeowner in mind: plenty of room to cook a gourmet meal, entertain impressively, relax indulgently, set up an in-home office . . . or pack-up and go for the weekend, without a second thought.

Most of Wharf II homes have two car garages — a convenient all-weather protection for sails and wheels, alike. Generous parking is provided for the entire community. Best of all, every home has a dramatic water vista, which can be enjoyed by you and your guests from many outdoor balconies, decks and terraces.

THE CHESAPEAKE

- Lake-access patio and wooden deck
- Formal entry foyer
- Sun-filled front kitchen
- First floor powder room
- Formal dining room overlooking living room
- Step-down living room with fireplace and balcony
- Master bedroom suite with walk-in closet, balcony and private bath
- Guest bedroom suite, also with private bath
- Loft above with skylights, for library or guest retreat

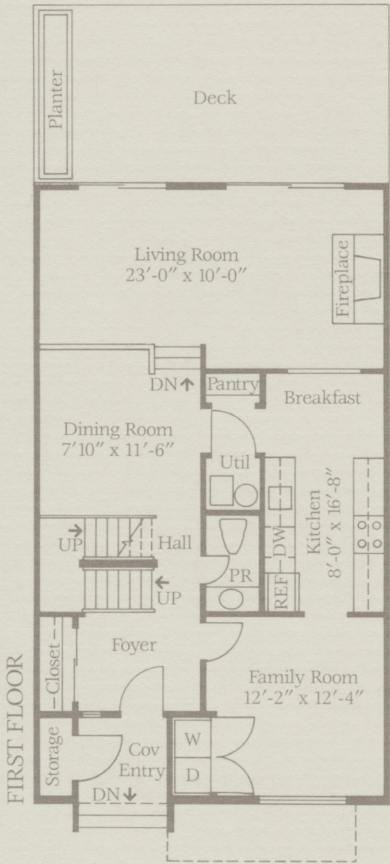


THE ANNAPOLIS

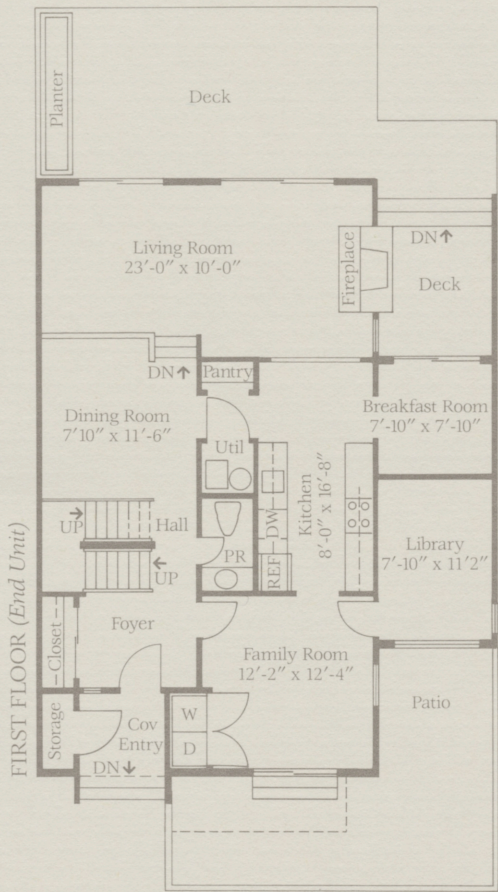
- Lake-access patio and wooden decks
- Family room with laundry area
- First floor powder room
- Pantry and breakfast area in kitchen
- Three-story open dining room with skylight
- Step-down living room with fireplace and deck
- Master suite with cathedral ceiling, dressing room, jacuzzi bath, skylight and balcony
- Two guest rooms, one with balcony
- Sky-lit loft above, for game room or in-home office

When the Annapolis is chosen as an end unit, the home also features a first floor breakfast room with cathedral ceiling and a library in addition to an enclosed front patio.

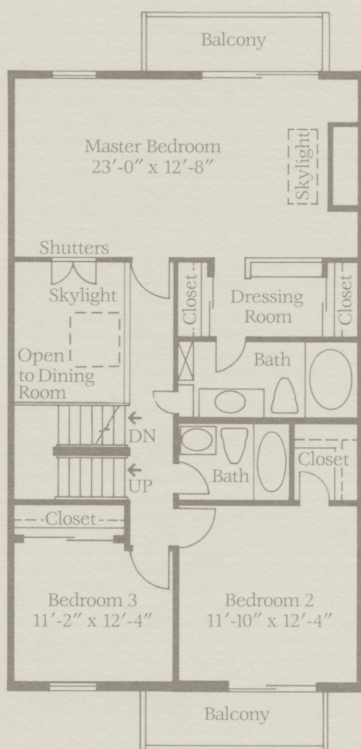
Standard Unit Plan



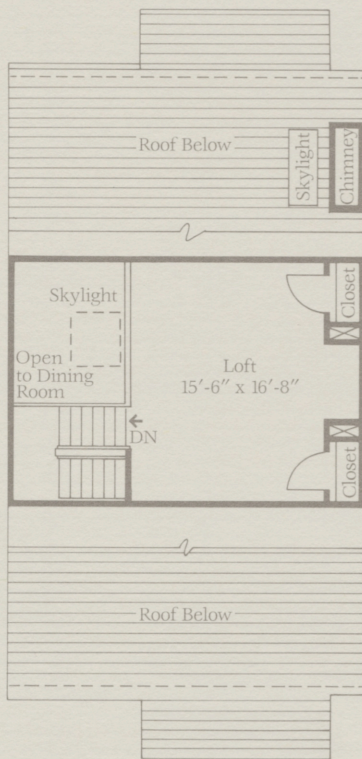
End Unit Plan



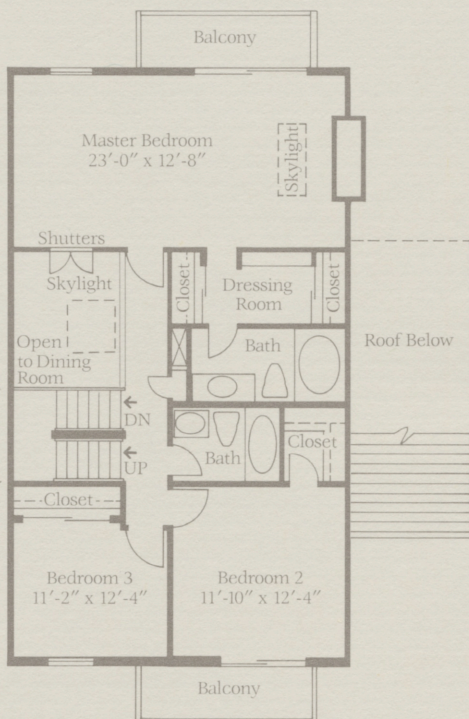
SECOND FLOOR



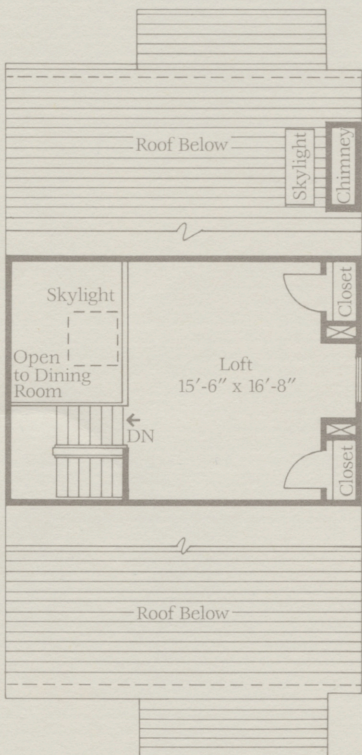
THIRD FLOOR



SECOND FLOOR (End Unit)



THIRD FLOOR (End Unit)

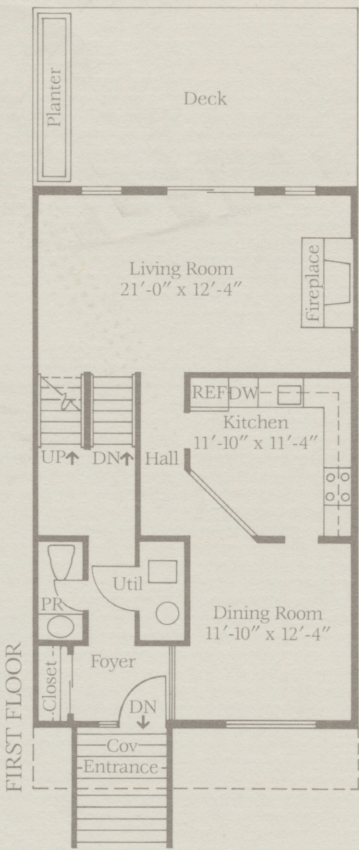


THE BAY RIDGE

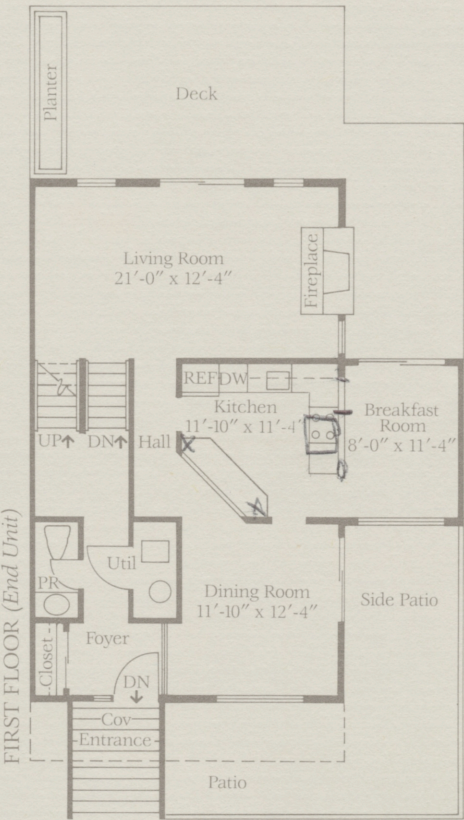
- Step-down living room with 18' high ceiling, fireplace and deck
- Step-down formal dining room
- Gourmet kitchen with breakfast area
- First floor powder room
- Second story loggia, open to living room, ideal as a family room or study
- Laundry area
- Two guest rooms with full bath
- Full-floor owner's suite, with dual-sink vanity, large walk-in closet and balcony

When chosen as an end unit, the Bay Ridge also features a first floor breakfast room, with cathedral ceiling, private front patio and a side deck.

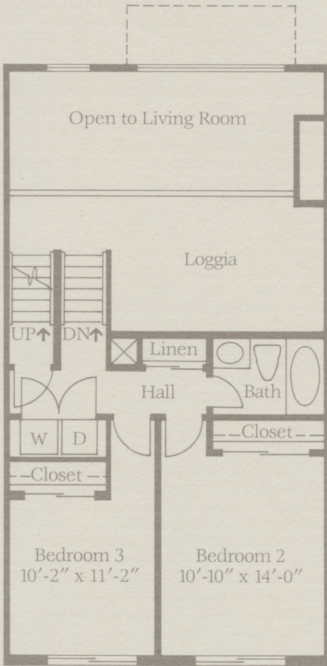
Standard Unit Plan



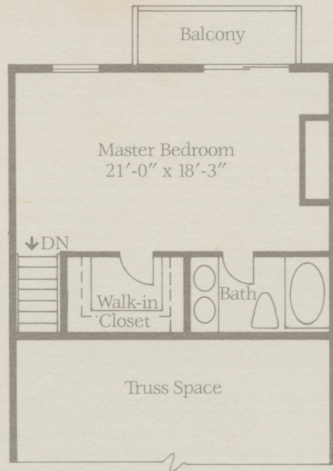
End Unit Plan



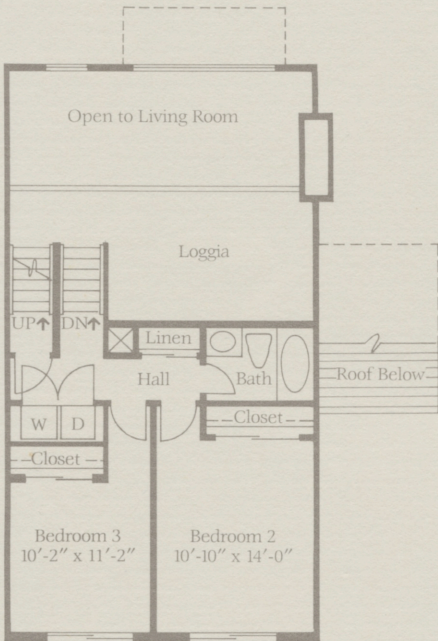
SECOND FLOOR



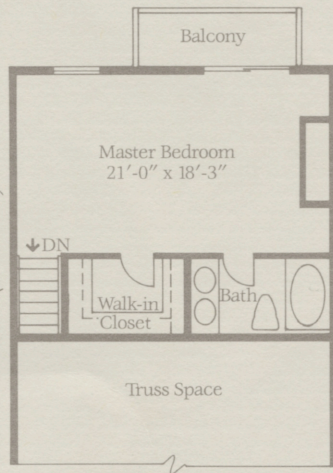
THIRD FLOOR



SECOND FLOOR (End Unit)



THIRD FLOOR (End Unit)



Dimensions and details are approximate and subject to change without notice.

Design by Carter/Comella Graphic Design